



LOVE • FAITH • HOPE

- from people to people



THE FINNISH EVANGELICAL LUTHERAN MISSION

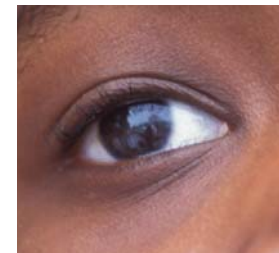




The support of our contributors provides children in developing countries with the opportunity to get an education and to shape their future.

THE WORLD NEEDS ACTS OF LOVE

Our world needs more justice, caring and love. The calling of the Finnish Evangelical Lutheran Mission is to respond to this challenge. We carry out practical efforts to ensure a dignified life for all people.



We believe in long-term co-operation. The experience of local churches and people as experts in their own daily lives, culture and religious contexts inform and guide us in our actions. Together we enable good things to happen.

Our motivation is founded on Christian faith and love for our neighbour.





Education for girls is the key to the well-being of an entire community.

WE CARE ABOUT PEOPLE

The Finnish Evangelical Lutheran Mission operates in more than 20 countries, of which the majority are developing countries. Our activities aim at eradicating poverty and at strengthening the ability of those affected to improve their quality of life.

We search out those whose needs are most urgent. Special attention is paid to women and children, the sick, disabled and those affected by hiv/aids. Our approach to human life is holistic and takes into account the material, social and spiritual needs of each person in his or her context.

We carry out our tasks through parish work, education, health care, social work and development co-operation.





The northern churches govern the majority of material resources.
The majority of the world's Christians live in the global south.

CHRISTIAN FAITH CONNECTS

The companions of the Finnish Evangelical Lutheran Mission are often Christian communities or churches in a minority position in areas dominated by other world religions. We support the ministry and congregational work, including the training of church workers, of our companion churches.



It's all about sharing, mutual giving and receiving. We mutually share our material, social and spiritual resources and expertise.

Making Christian faith a reality in daily life in different cultural contexts invites us as a community of Christians and churches into a learning process.





Literacy is a step toward a better future. Skills and knowledge lay the foundation for sustainable development.

COMMITMENT IS A KEY TO SUSTAINING RESULTS

The experience of the Finnish Evangelical Lutheran Mission has proved that shared efforts and long-term commitment bring about results.

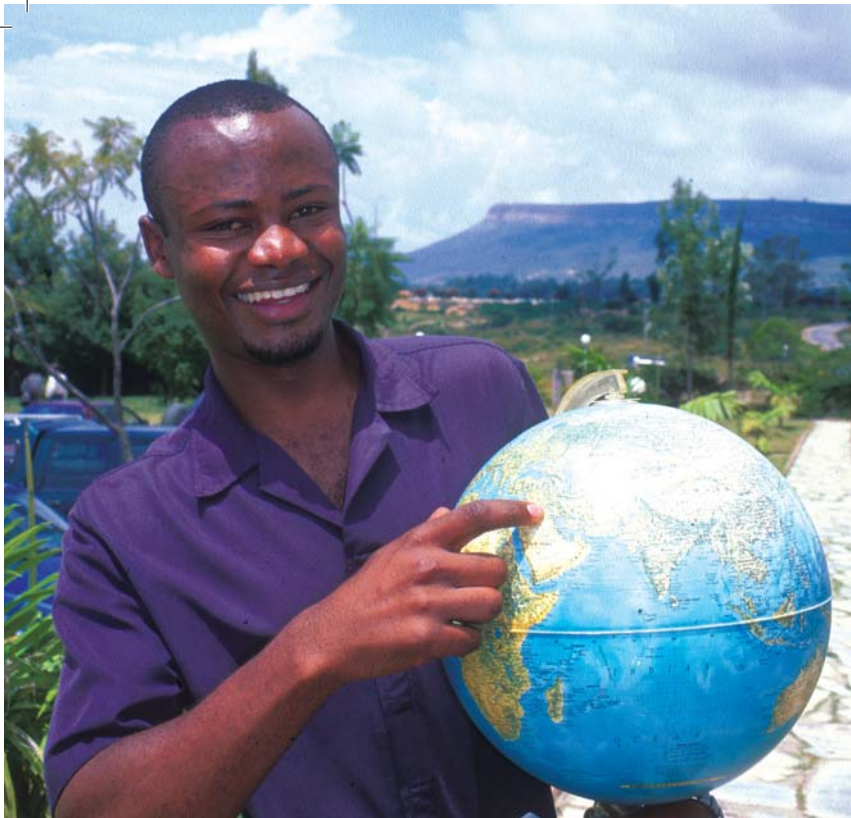
The hopes and needs of local people and communities constitute the foundation of our work. We facilitate transformation through holistic development.



THE FINNISH
EVANGELICAL
LUTHERAN MISSION

In many countries, the churches' educational, health care and social work supplement the services lacking within the community. The work of the churches has greatly contributed within the society to the caring of the sick, disabled and marginalized. The Gospel empowers us with the courage to challenge every day hardships.



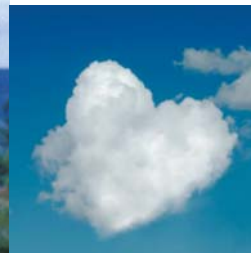


This is our world. Together we can make it a better place to live.

LOVE, FAITH, HOPE - FROM PERSON TO PERSON

Making faith, love and hope a reality means taking actions, great and small. Each of us is challenged by the opportunity to make a difference. Join us in assuming together global responsibility for dignified lives and justice for all. From experience, we know that even a small contribution can mean a significant change in someone's life.

The Finnish Evangelical Lutheran Mission takes your contribution to its intended destination.



Further information:

www.mission.fi

Finnish Evangelical Lutheran Mission

Tähtitorninkatu 18

P.O. Box 154

FI-00141 HELSINKI

Tel. +358 (0)9 12971

sls@mission.fi

Donations may be made
to the following bank account:
Sampo Bank 800014-161130





The Finnish Evangelical Lutheran Mission (FELM) is a mission organisation of the Evangelical Lutheran Church of Finland. Our activities are supported by parishes, Christian organisations, and individuals. Our development co-operation projects also receive funds made available for NGOs by the Foreign Ministry of Finland.

The FELM employs approximately 380 staff members, of whom 240 work in mission capacities in more than 20 countries. Of our 25 million euro annual budget, 77 % is designated for our foreign activities.